

SET THE BAR



COCKTAIL LIST

SIGNATURES & CLASSICS





GIN'GER

Start Point Salcombe Gin -
this classic citrus led gin
is elegantly smooth,
distinct and complex yet
extremely versatile. Mixed
with Sweet Ginger,
Elderflower and Lemon.





SAINTE PEPPERCORN

Salcombe Rosé Sainte Marie
Gin - a delicate, fresh and
truly exquisite gin. Mixed
with Pink Peppercorns,
Lemon, White Peach, Jasmine
and Mint.

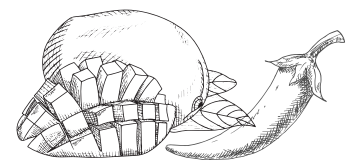




SPICY MANGO'RITA

A SPIN (WITH A KICK) ON A CLASSIC
MARGARITA.

Ocho Reposado Tequila - a subtle nutty, vanilla character from two months of gentle ageing in oak. Mixed with Spicy Mango, Lemon and Ginger.





CARIB'BEAN COFFEE

Gosling's Black Seal Rum - A brilliant, well balanced dark rum, with enticing notes of butterscotch, vanilla and caramel. Mixed with Espresso, Pineapple and Green Bananas.





PINK TEQUILA ALMOND JOY

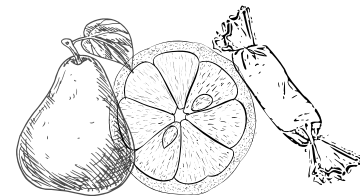
Ocho Blanco Tequila - A luscious, full-textured white Tequila, with beautiful 100% agave flavour integrity. Mixed with Almonds, Ginger, Pink Lemonade with Raspberries and Lime





BUTTERSCOTCH RUM-BLE

Appleton Estate VI Reserve Rum - A smooth and sweet Jamaican rum, offering notes of toffee apples, cinnamon, crystallised ginger and soft oak spice. Mixed with Pear, Butterscotch and Citrus.





ESPRESSCHIO MARTINI

Vanilla Vodka, Cold Brew
Espresso, Coffee Liqueur,
Pistachio Syrup





RED TEMPTATION

Havana Club 3-Year-Old Rum,
Orange Curacao, Raspberry,
Lime





RO-COCO

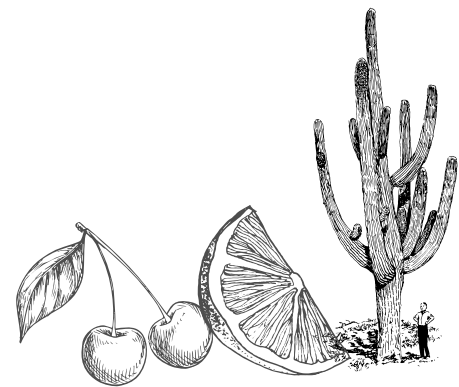
Coconut Rum, Coconut Tequila,
Rose Liqueur, Lime, White Peach
& Jasmine Soda





DESERT KISS

Tequila or Mezcal, Maraschino
Liqueur, Violette Liqueur, Lime





PICANTE

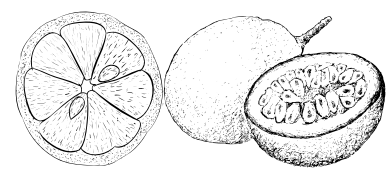
Tequila, Coriander, Chili, Agave,
Lime





PASSIONFRUIT MARGARITA

Passionfruit, Tequila, Lime





CUCUMBER+ MINT MARGARITA

Tequila, Lime, Cointreau,
Cucumber, Mint





COCONUT MOJITO

Rum, Coconut Syrup, Lime,
Mint, Soda





LYCHEE MARTINI

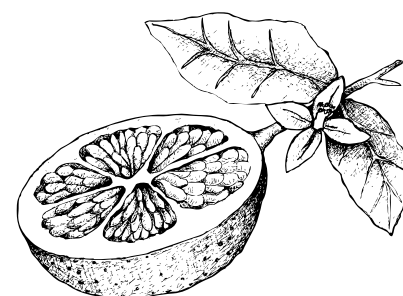
Vodka, Lychee Liqueur, Lime,
Simple Syrup





SPICY PALOMA

Tequila or Mezcal, Grapefruit,
Agave Nectar, Jalapeno, Lime





POMELIME PALOMA

Chase Grapefruit & Pomelo

Gin - Mixed with Chase

Elderflower liqueur, fresh lime

& gomme syrup

